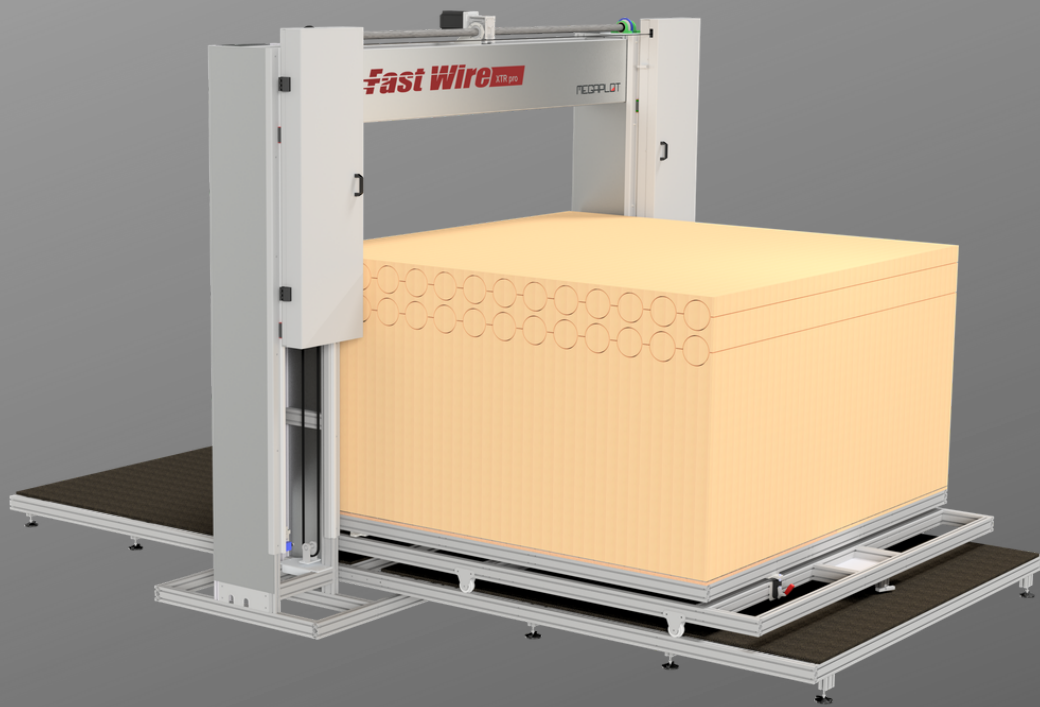


XTR PRO

CNC ABRASIVE FAST WIRE FOAM CUTTERS



MEGAPLOT was established in 1997 when its two co-founders and current co-owners built their first CNC hot wire machine. Over the last 22 years we have gained extensive experience in CNC machinery designing, manufacturing, selling and servicing. We are well-known for our excellent pre- and post-sale technical support appreciated by our customers worldwide. Our hot wire EPS and XPS hot wire foam cutting machines, XTR PRO fast wire cutters as well as 3D CNC Phidias routers are known not only for their reliability and innovation but also their ease of use - all this thanks for the fact we design and built our equipment from scratch, including all mechanical components, electronics design and manufacturing, as well as software coding.



We are proud to have developed into a company represented by over 45 distributors worldwide and having over 5500 customers in over 50 countries on 5 different continents.

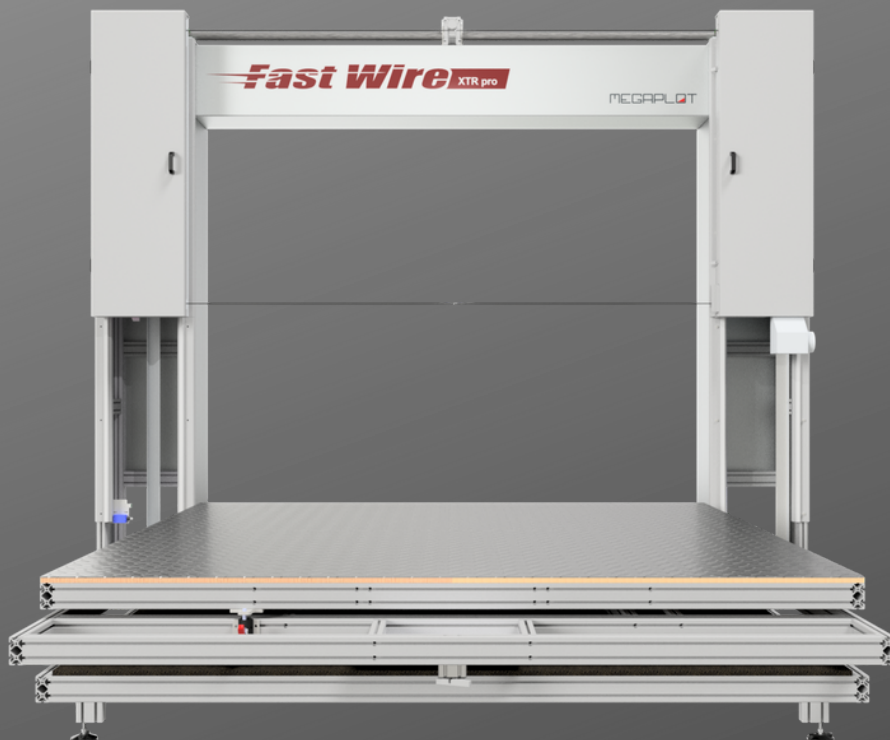


Our horizontal XTR PRO fast wire cutters are computer-controlled machines, which come with our own advanced electronic controllers based on ARM architecture; they connect to the PC via USB and are then controlled with our proprietary FastWire application for Windows OS.

The cutting files (drawings) can be prepared in any graphics software capable of export to one of the formats supported by our software, e.g. CorelDraw, AutoCad or Adobe Illustrator. Once the drawing is opened in our software all you have to do is set cutting parameters (such as cutting speed and wire rpm) and click Cut.

Most simple cuts and trimming operations can also be performed with the use of the included wired handheld/remote, so very often there is no need to prepare any drawings whatsoever.

During the cut the endless fast wire is sped up to 280 km/h - a wide selection of cutting wires is available to ensure consistent high-quality cuts in a variety of different materials.



HIGHLIGHTS:

- Fully automatic contour and sheet cutting
- Excellent value for money, high-end specs
- Can handle full size blocks - a variety of working areas from 1200x2000 mm up to 3000x3000 mm
- Wide selection of cutting wires
- Intuitive and easy to learn FastCutter control application

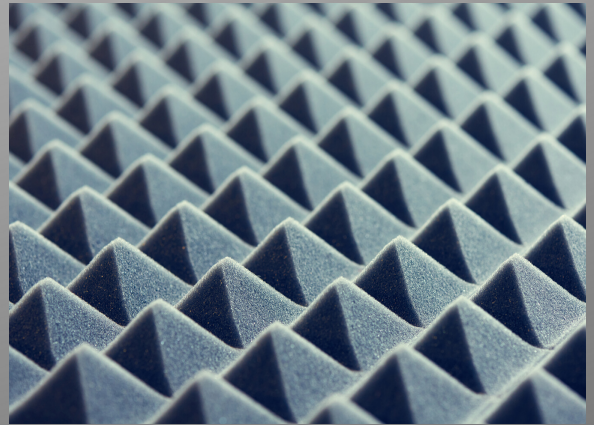
THE XTR PRO SERIES IS IDEAL FOR:

- PU/PUR - polyurethane foam
- PIR/ISO - polyisocyanurate foam
- PE & PP - polyethylene & polypropylene
- EPS/XPS - expanded & extruded foams
- rockwool & mineral wools
- foamglass
- visco foams
- rebond foams
- and a wide variety of other flexible and rigid materials



TYPICAL APPLICATIONS

- Furniture and upholstery industry (high resilience foams, visco foam, memory foam etc.)
- Automotive industry (rebond, acoustic foam, etc.)
- Insulation industry (PUR, PIR, EPS, rockwool, foamglass, melamine foam)
- Construction industry (custom angled insulation plates out of rockwool and PUR)
- SIP industry (cutting full-size PUR and PIR SIP panels)
- Water vessels (surfboards, rigid-hulled boats)
- HVAC systems (reticulated foam ventilation filters)
- Medical industry (rebound foam, memory foam used for orthopedic soft goods, bedding, wheelchairs etc.)
- Packaging industry
- QC & Lab testing

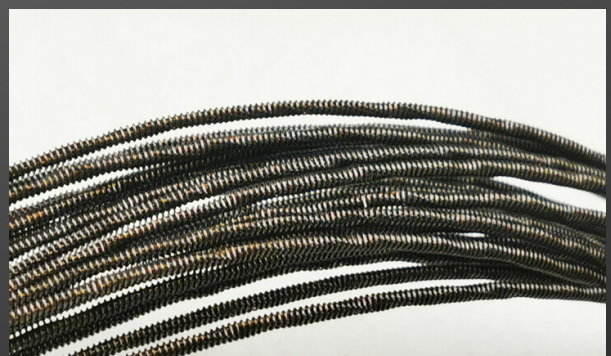
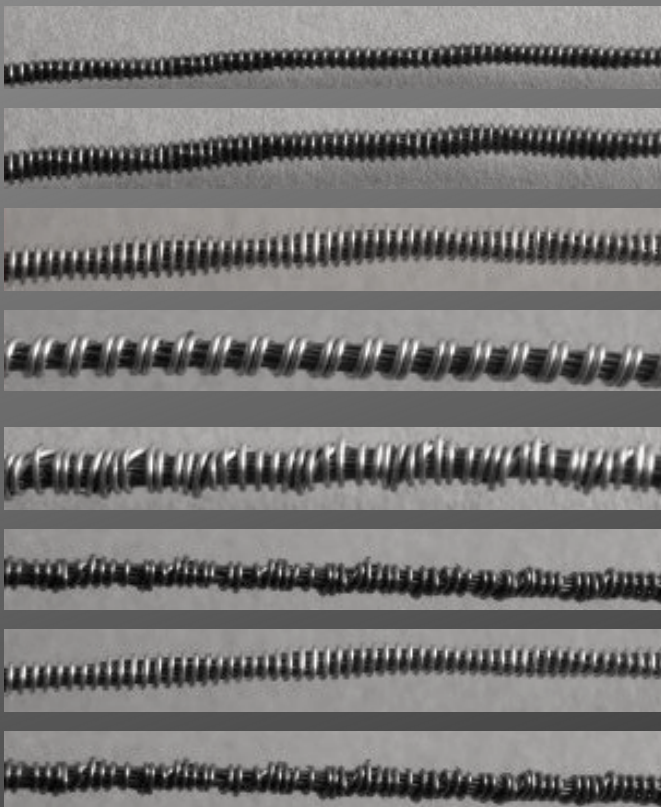


	XTR PRO 1200	XTR PRO 2000	XTR PRO 2500	XTR PRO 3000
WORKING AREA	1200X2000 mm	2000x2000 mm	2500x2500 mm	3000x3000 mm
WORKING HEIGHT	1300 mm			
CUTTING WIRE	endless, abrasive, dia. 1.1-1.6 mm pneumatic wire tensioning, wire break detection			
WIRE SPEED	280 km/h			
WHEEL DIAMETER	HDP A wheels of 300 mm diameter			
WIRE MOTOR	4 kW, 400V, 50Hz, inverter-controlled			
X & Y DRIVES	3-phase easy servo motors, worm gears			
MAX TRANSIT SPEED	5 meters/min			
ACCESSIBILITY	full access from all sides, optional full enclosure			
POWER REQUIREMENTS	AC 400V (3-phase), up to 6KW			
INCLUDED IN THE PRICE	XTR PRO FastWire Cutting machine FastWire application with unlimited free upgrades Advanced electronic controller based on ARM architecture with USB support 5 cutting wires Wired handheld with a display 12 month warranty Assembly and operational manuals Year-round tech support Unlimited free training in our factory in Poland			
NOT INCLUDED IN THE PRICE	Windows PC necessary to control the machine Graphics software, e.g. CorelDraw Delivery, installation and training on site			

CUTTING WIRES

The XTR PRO fast wire cutters use an abrasive wire traveling at high speeds to cut the shapes that have been previously drawn in your graphic software.

Various wires are available for different materials - they differ in their diameter and material as well as type of wrap.



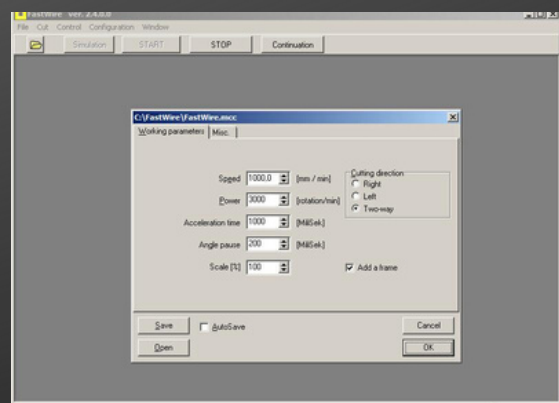
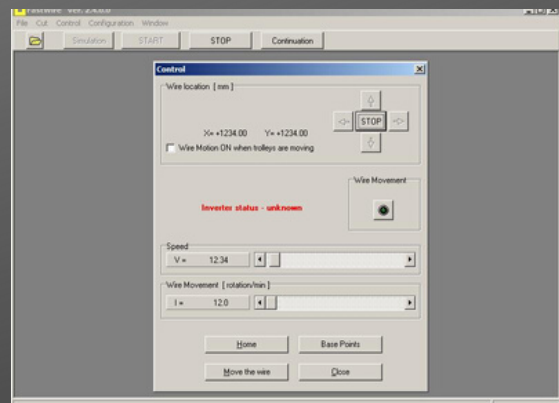
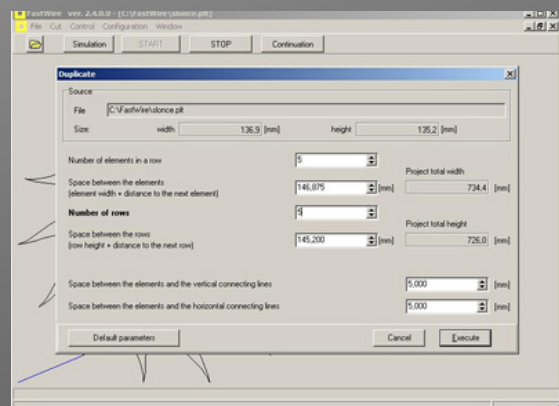
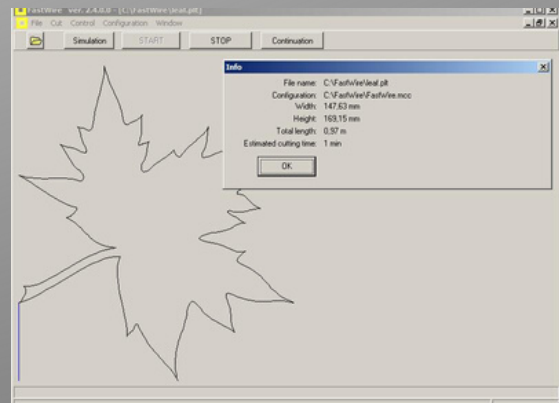
Wires designed for specific applications (various materials, diameters and type of wrap) and are available upon request.

SOFTWARE

All XTR fast wire cutters come with our own, user-friendly yet powerful FastCutter software. It is available in many different languages and is constantly being improved and developed. All customers receive free upgrades when new versions become available so they are always able to use the machine to its full potential.

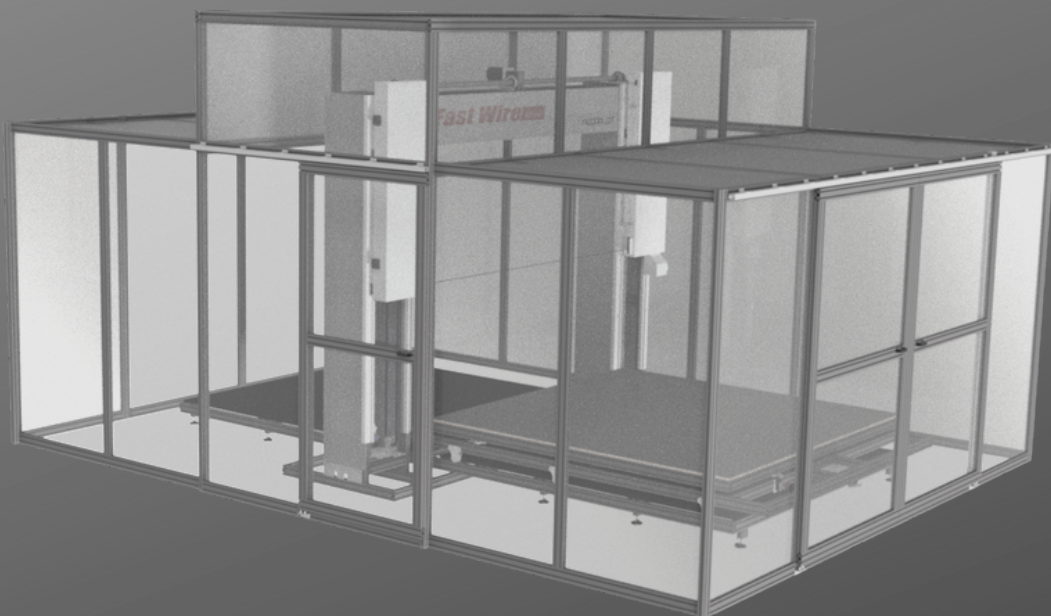
FASTCUTTER

- included with all XTR units
- unlimited free upgrades available in multiple languages
- supports the following file formats: plt - e.g. CorelDraw, dxf - e.g. AutoCad, EPS/AI - e.g. Adobel Illustrator
- compatible with Windows XP, Vista, 7, 8 and 10
- user-friendly interface, easy-to-use yet powerful
- on-screen cutting simulation
- unlimited settings' libraries
- built-in duplication feature
- full manual control for simple cuts not requiring a drawing



OPTIONAL ACCESSORIES

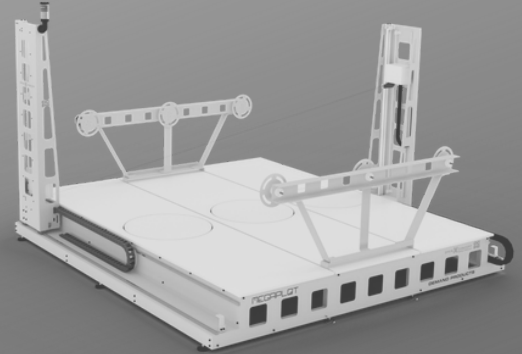
- FULL ENCLOSURE - sliding door on front and back, operator's side door, full ceiling, keeps all dust within the machine, increased safety for the operator
- MANUAL TURNTABLE - manually controlled, allows for perfectly square cuts from two sides without the need to touch the block, will easily handle full blocks with its up to 400 kg load capacity
- DUST VACUUM SYSTEM - custom designed dust collecting head collects most dust produced during the cutting process, four-bag design for improved performance and less frequent maintenance, powerful 7 HP 3-phase motor, comes complete with 10 meters of flexible 100 mm piping
- WINDOWS 10 TOUCH PC built-in fanless industrial touch PC MP_15.6_2020 [15.6" capacitive display, Intel J1900 Quad-core, 4 GB DDR3, 64 GB SSD, 1920x1080, IP65, Windows 10 PRO]



OUR OTHER MACHINERY LINES

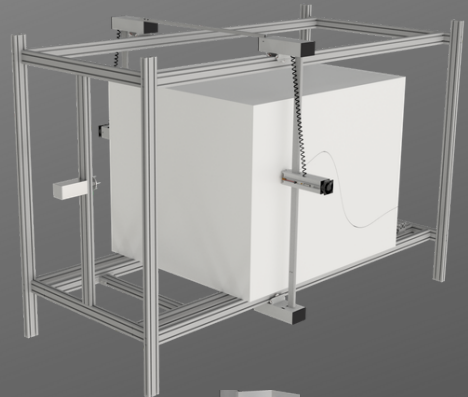
OPEN CONCEPT HOTWIRE CUTTERS

For contour and sheet cutting of EPS & XPS foams. Available in multiple sizes and configurations. Perfect for sloped roof cutting, architectural details, signage, packaging, insulation, molds for concrete, prototyping



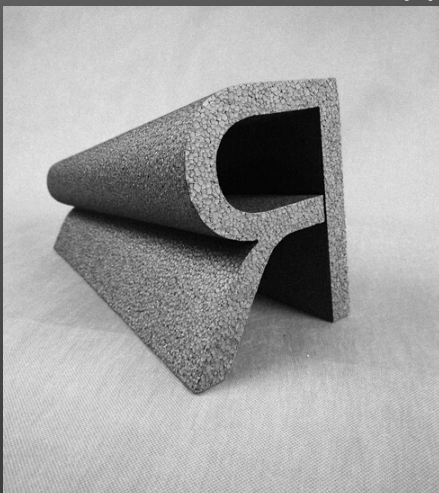
HOTWIRE CNC CUTTERS

3 legacy series ranging from compact to industrial. Available in multiple sizes and configurations. Perfect for EPS and XPS.



PHIDIAS 3D CNC ROUTERS

Professional CNC routers with very attractive value for money. Heavy-duty industrial design and high end specs make it perfect for wood, plywood, PVC, plexiglass, dibond, eps, xps, aluminum, brass, copper etc.



Testimonials

"We purchased our Megaplot 3D hotwire cutting machine in 2014. We've been amazed with the ingenuity and quality of the machine. Megaplot offers fantastic value for money and some of the best after sales support in the Market".

Jeremy Smith, Director of Custompac Ltd (UK)

"I have dealt with Rafal at Megaplot for a number of years and, whenever we have requested parts or had an issue with our foamcutter or CNC machine, have found his quick response and professionalism second to none. We are based in New Zealand so were concerned about how we would get on dealing with a company over in Poland, but are extremely happy with Megaplot!"

Karen van Tiel, Accumen Shapes Ltd. (NEW ZEALAND)

We are the leading factory in Sweden for signs, logos and models in EPS/XPS, acrylic, foamed PVC and such. We currently own 2 foam cutters and 1 Laser made by Megaplot. We are extremely satisfied working with Megaplot. Pre-sales, sales and after-sales/technical service excels at their points. Fast response, fast deliveries of material/parts when needed. Accurate, easy to use software for machines. Our experience of Megaplot is all the best in any way. We see a bright future together with Megaplot.

Johan Ljoner, co-owner of ScandExpo AB (SWEDEN)

"The Max Frank GmbH & Co. KG purchased the MegaPlot hotwire cutting machine in 2014. We use a multi-wire-system, a single-wire-system and a turntable to produce formwork elements for the construction industry. We are very satisfied with the machine, the price-performance ratio and the extremely good after-sales support."

Helmut Gürster, Max Frank GMBH & CO. KG (GERMANY)

"I have been working as Megaplot agent in Israel for over five years. The equipment is very reliable, effective and well built. Still our clients have required support from time to time. The response from Megaplot has always been immediate and generous. I wish all my suppliers were as effective and service minded as Megaplot."

Amir Ghitis, KLA Trade & Engineering (ISRAEL)

'Since this is our second model of foam cutter from MegaPlot over the years we can only tell its reliable machines. But sometimes questions pop-up and in those cases Rafal at Megaplot always been very fast and helpful in his response."

Martin Danning, Sign Up Form & Dekor (SWEDEN)



For inquiries:
email: office@megaplot.com
phone: +48 693 707 575
www.megaplot.org